

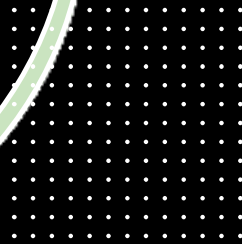
# Closing the Gaps in Diversion Detection: Leadership Pearls and Operational Lessons.

Dr. Anthony Maddalena Rph, Pharm-D  
Associate Director of Pharmacy  
Operations





# Where Diversion Occurs



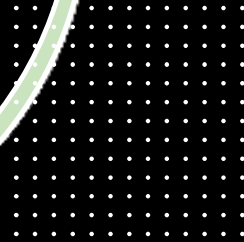
## Common diversion points:

- Automated dispensing cabinets (ADC)
- Pharmacy procurement and inventory
- Medication preparation areas
- Medication waste processes
- Patient administration documentation



# Key Vulnerabilities and Consequences

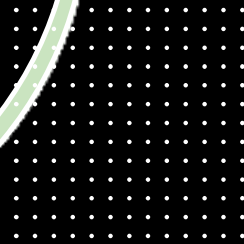
- Automated dispensing cabinets
- Procurement
- Medication preparation areas
- Waste
  
- Regulatory fines.
- Legal and compliance exposure
- Accreditation findings
- Patient safety events





# Intelligent Diversion Detection Tools

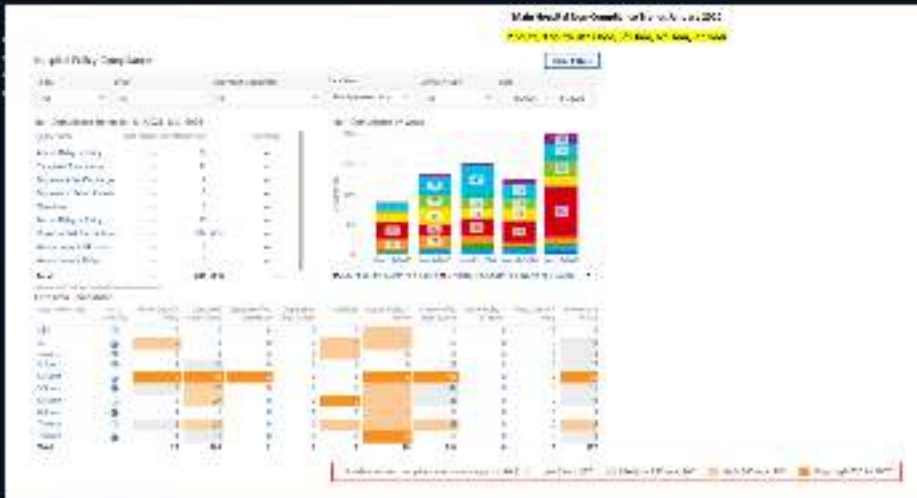
- **Advanced systems analyze data from:**
- Automated dispensing cabinets
- Electronic medication administration records
- Pharmacy information systems
- Waste documentation
- Controlled substance vault transactions



# Health site Diversion Documentation

Unit	Unit Name	1/1/26 - 1/31/26	1/1/25 - 1/31/25	1/1/24 - 1/31/24	1/1/23 - 1/31/23
S-South	ICU	N	Y	N	Y
PCOS	ICU	N (91%)	Y	N (91%)	Y
ICU	ICU	Y	Y	N (94%)	Y
ICU	ICU	Y	Y	N	Y
ICU	ICU	Y	Y	N	Y
ICU	ICU	Y	Y	N	Y
S-South	ICU	Y	N (94%)	N (94%)	Y
S-North	ICU	Y	Y	N (91%)	Y

If a unit does not appear on this report, they have 100% compliance with the course



Westchester Medical Center  
January 2026 Flagged User High Usage

CareFusion  
Westchester Medical Center  
CS Standard Deviation  
CS Transactions w/ CS Doses/Day > 2 SD Above Mean >= 3: No. of Period: January 2026

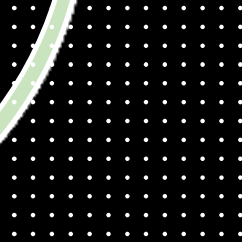
Care Area Name	User Name	No. of CS Doses	No. of CS Days	Avg CS Doses / CS Day	CS Transactions w/ CS Doses/Day > 2 SD Above Mean
ICU	[REDACTED]	35	4	7	4.1
ICU	[REDACTED]	31	3	7	4.1
ICU	[REDACTED]	119	11	10.82	3.2





# Advancing Diversion Detection

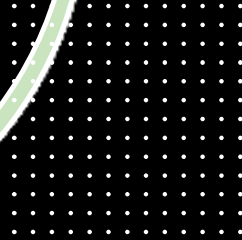
- Trust the data but verify the workflow
- Technology should support not replace oversight
- Diversion prevention is culture, not just a policy.
- Timeliness





## Leadership Pearls

- Diversion detection
- Discrepancy resolution
- Building a diversion resistant culture
- Cross department collaboration.



Questions

